



**PERFECT DRIVE**  
 — VACATION RENTALS —  
*at PGA Village™*

PORT ST. LUCIE, FLORIDA

*2018-2019*

**MONTHLY RATES**

	<b>One Bedroom Villa</b>	<b>Two Bedroom Villa</b>	<b>Three Bedroom Townhome</b>
Dates:	800 Sq Ft 2 Queen Beds	1300 Sq Ft 2 Queen & 2 Full Beds	1600 Sq Ft 1 King, 1 Queen & 2 Twins
04/01/18 - 12/20/18	\$1484.00*	\$1764.00*	\$1904.00*
12/21/18 - 01/31/19	\$2240.00*	\$2800.00*	\$3360.00*
02/01/19 - 03/31/19	\$3500.00*	\$5040.00*	\$5600.00*

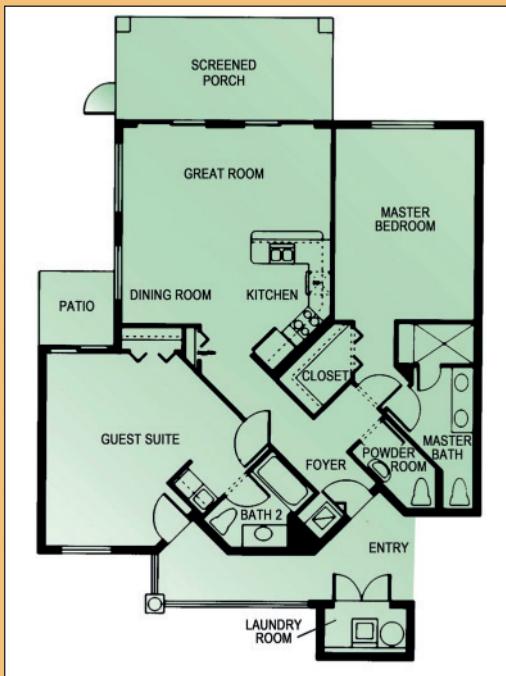
\* Plus 11.5% tax and Admin Fee. Per 28 nights with a 28 night minimum stay. Mid-Stay Housekeeping not included. Departure Housekeeping fee may apply. Based on availability. Rates subject to change. Arrival and departure date restrictions may apply.



**(772)873-0515**  
[www.StayPGA.com](http://www.StayPGA.com)

# Sample Floor Plan

*Two Bedroom Condo - 1,300 sqft*



## Amenities

- All Non-smoking units
- Heated Pool
- PGA Golf Club on site
- 24 hour on call service
- 30 restaurants within 2 miles
- Recently renovated
- Private Screened porches
- Free Wi-Fi
- Private Laundry facilities
- Hairdryers & Irons
- Fully Equipped kitchens
- Spacious Living area
- Housekeeping available
- Golf course views available

## Rental Office Located at:

525 NW Lake Whitney Place, #101, Port St. Lucie, FL 34986

772-873-0515 - [www.StayPGA.com](http://www.StayPGA.com)